

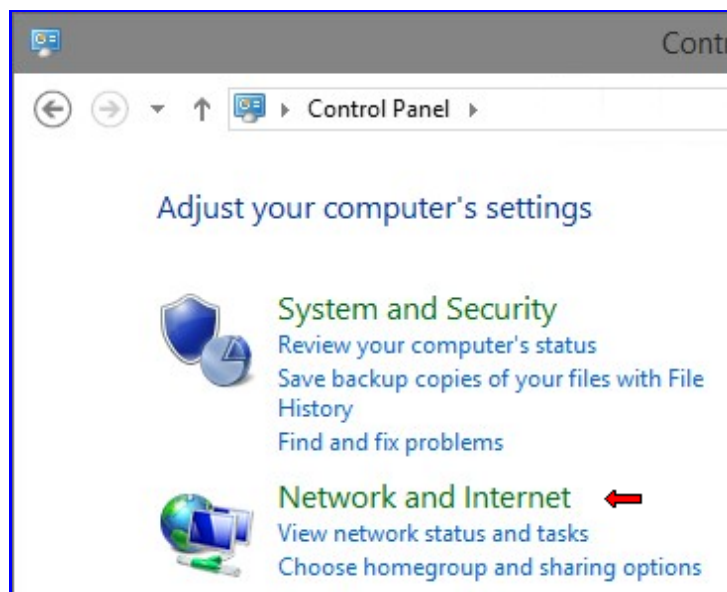


Università degli Studi di Messina

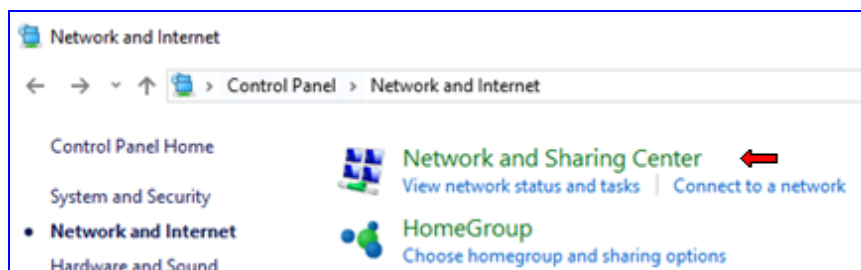
U. ORG. Sistemi ed infrastrutture ICT e Rete di Ateneo

Instructions for authenticated connection method to Ateneo wired network through Windows 10 operating system. This setup process is required only in locations where this connection type is enabled.

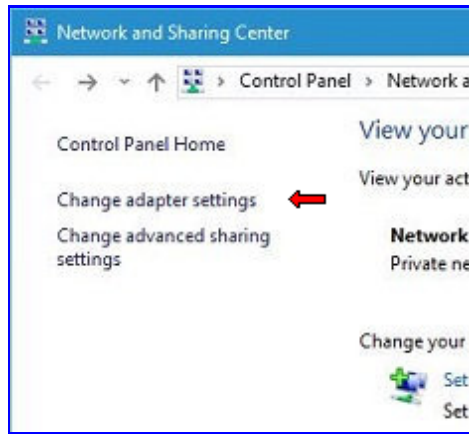
1) In **Control Panel** click on **Network and Internet**;



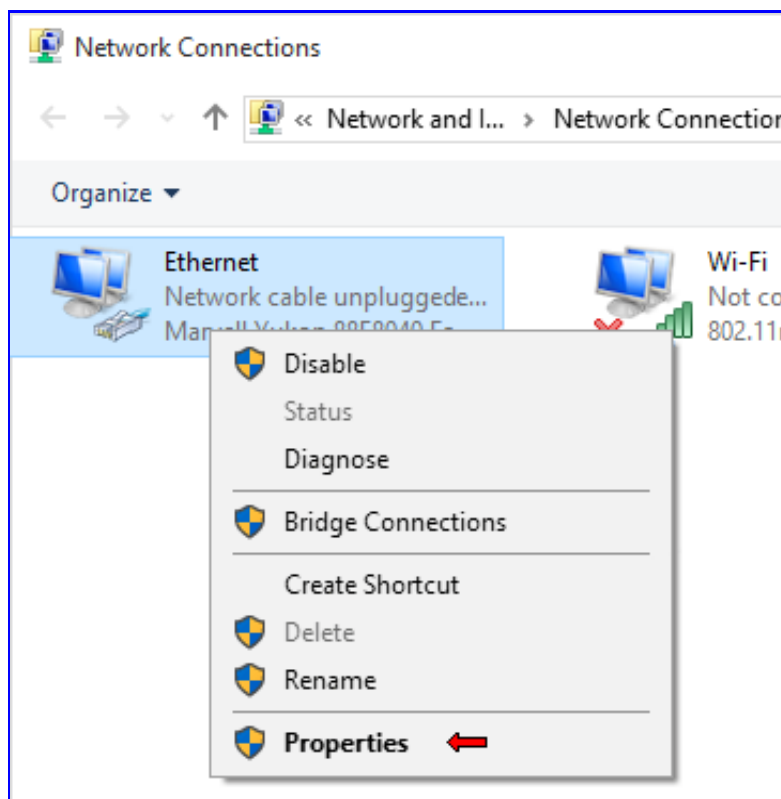
2) click on **Network and Sharing Center**;



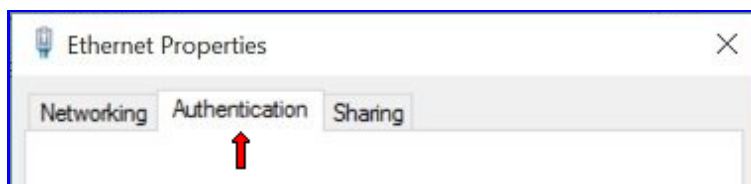
3) click on **Change adapter settings**;



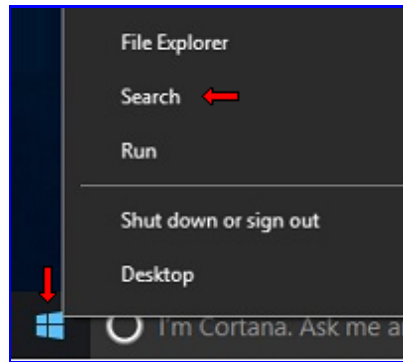
4) click the right mouse button on the relevant connection icon (**Ethernet** in the example below), then choose **Properties**;



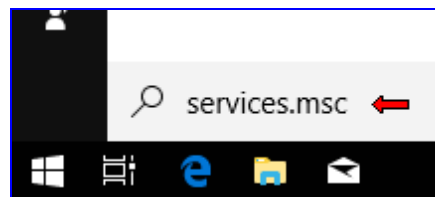
5) check if the **Authentication** tab is visible in **Ethernet Properties** window. If yes, jump to step 10), else continue to step 6)



6) click the right mouse button on the **Start icon** the, on the displayed menu, choose **Search**;

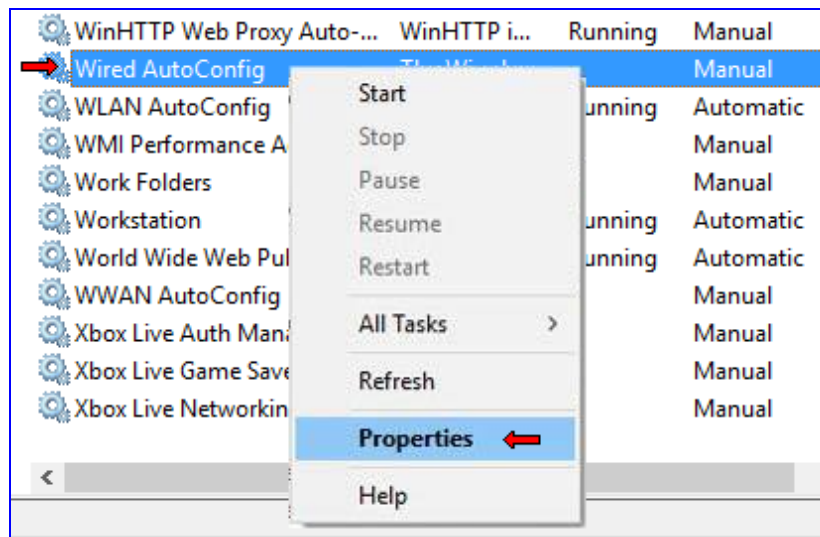


7) write **services.msc** and press **Enter**;

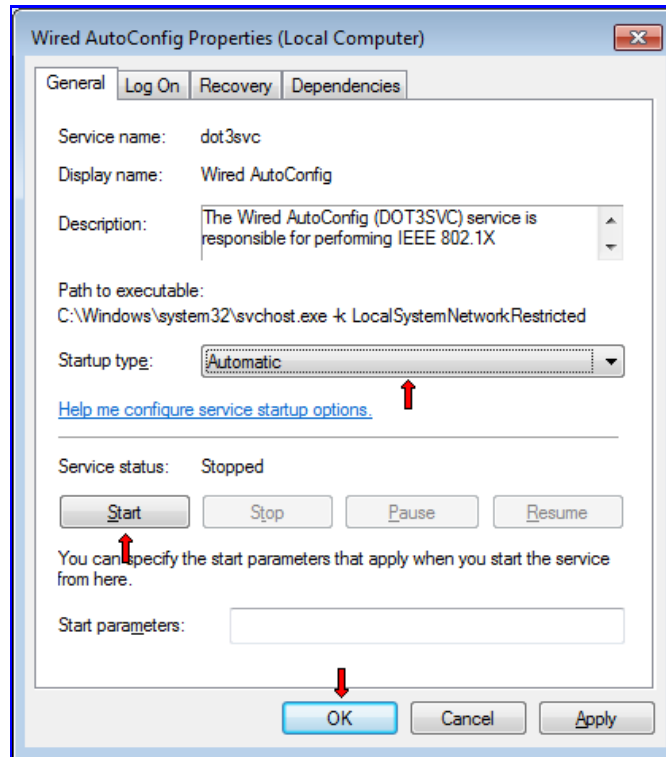


8) **Warning: next operations are very simple but even critical, so pay maximum attention to the instructions below.**

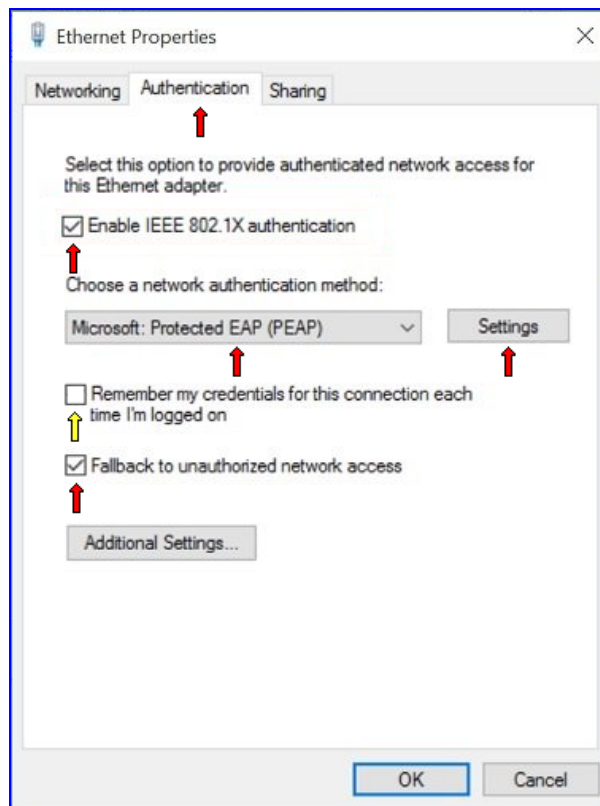
Search a service named **Wired AutoConfig** in **Services** window, click the right mouse button on it and choose **Properties**;



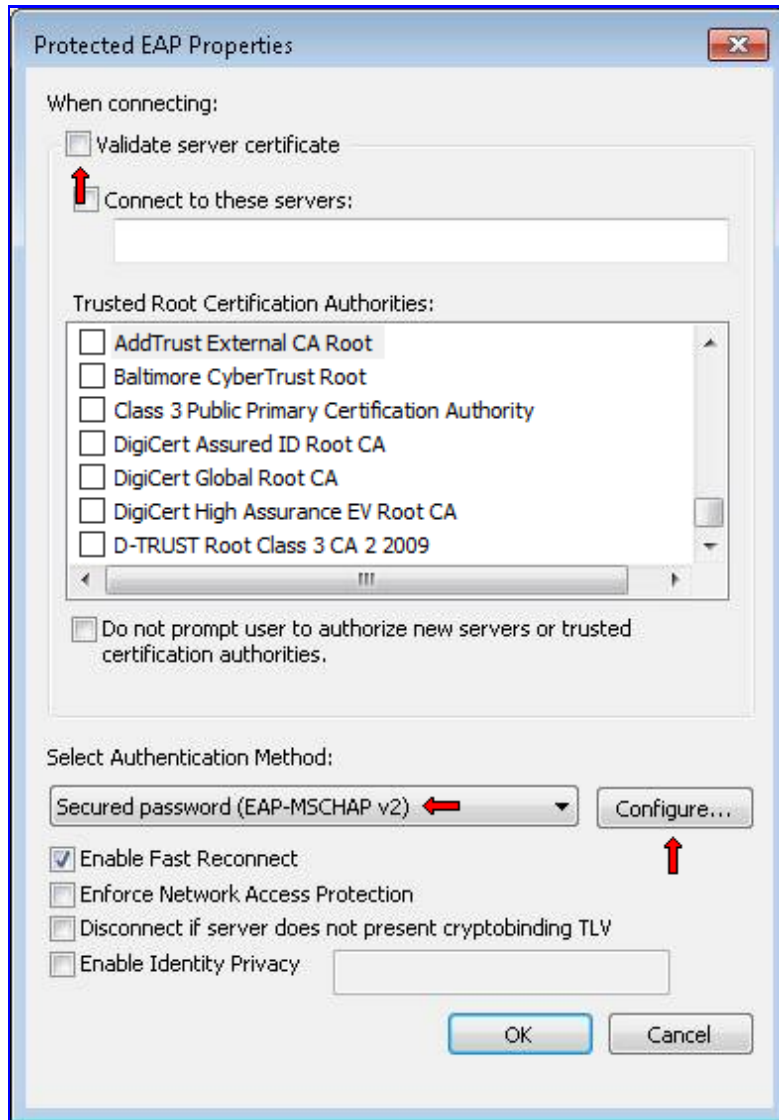
9) in the **Wired AutoConfig Properties (Local Computer)** window choose **Automatic** as **Startup type** (doing so this service will automatically start at every Windows startup); **only** if **Service status** is **Stopped** click the **Start** button; click on **OK** button; close the **Services** window; go back to step 5); if the service is already started go to the next step instead;



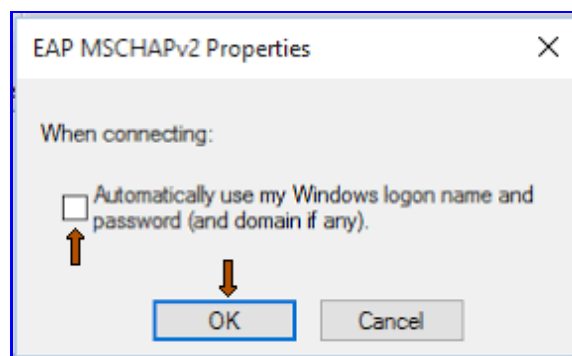
10) In the **Ethernet Properties** window click on **Authentication** tab; check **Enable IEEE 802.1X authentication** option; choose **Microsoft: PEAP (Protected EAP)** as network authentication method; check **Fallback to unauthorized network access** option; eventually check the **Remember my credentials for this connection each time I'm logged on** option; click on **Settings**;



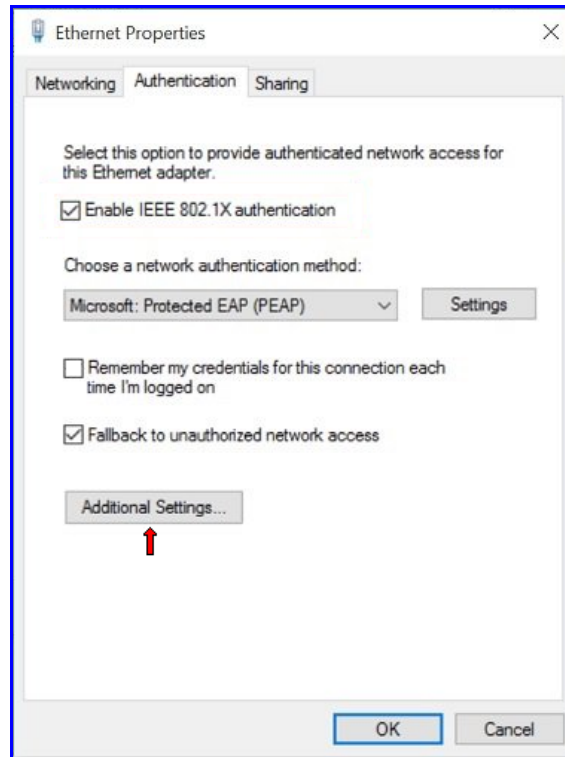
11) In the **Protected EAP Properties** window, uncheck **Validate server certificate**; choose **Secured password (EAP-MSCHAP v2)** as **Authentication method**; click on **Configure...**;



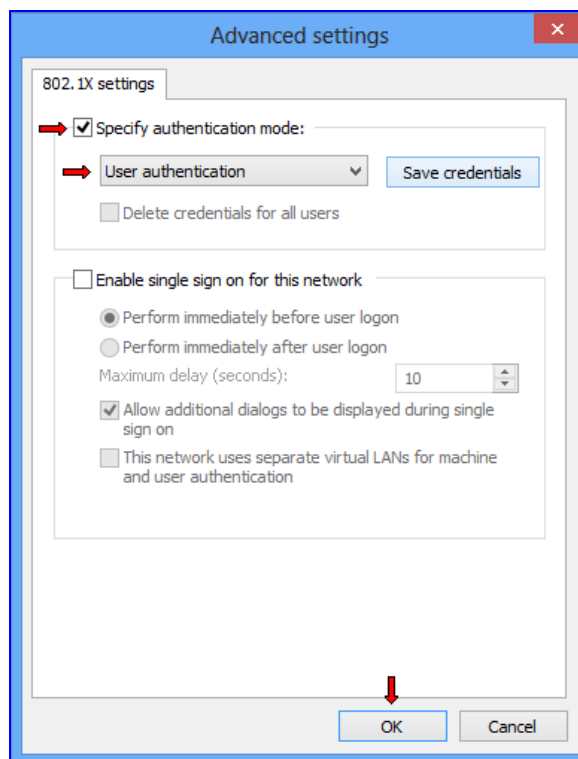
12) In **EAP MSCHAP v2 Properties** window uncheck **Automatically use my Windows logon name and password (and domain if any)** option; click on **OK**; click on **OK** on **Protected EAP Properties** window;



13) In **Ethernet Properties** window click on **Additional Settings...**;



14) In **Advanced Settings** window check **Specify authentication mode** and choose **User authentication** from authentication mode list; click **OK** button; click **OK** button on the **Ethernet Properties** window;



15) When the network cable is connected, a username and password request will show up; if you have checked the option "Remember my credentials for this connection" at step 10) you will no longer need to enter your username and password on subsequent connections.